

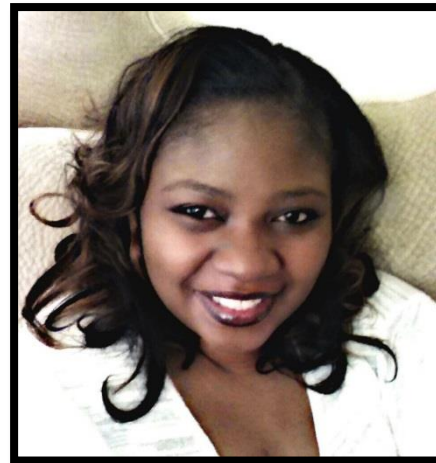


# Prosecution Strategies for Violence Reduction

**December 14, 2015**  
**2:00 p.m. – 3:30 p.m., ET**



# VRN Co-Director



*Kristie Brackens  
VRN Co-Director  
Bureau of Justice Assistance  
kristie.brackens@usdoj.gov*

# Objectives of This Webinar



- Provide an overview of the KC NoVA and BRAVE violence reduction programs
- Discuss steps for implementation of the programs
- Provide insight on achieved outcomes, challenges, and lessons learned

# Today's Speakers



*Dr. Tracey Rizzuto  
Associate Director  
School of Human Resource  
Education and Workforce Development  
Louisiana State University*



*Mr. Hillar C. Moore III  
District Attorney  
East Baton Rouge Parish, Louisiana,  
District Attorney's Office*



*Ms. Jean Peters Baker  
Prosecutor  
Jackson County, Missouri,  
Prosecutor's Office*

# Focused Deterrence and the BRAVE Strategy (Baton Rouge Area Violence Elimination)



Presented to  
**The Violence Reduction Network (VRN)**

December 14, 2015

East Baton Rouge Parish District Attorney Hillar C. Moore III  
and  
Dr. Tracey Rizzuto, LSU School of Human Resource  
Education and Workforce Development

# Focused Deterrence

## “Pulling levers”

Show that the cost of crime outweighs the benefits (Zimring & Hawkins, 1973)

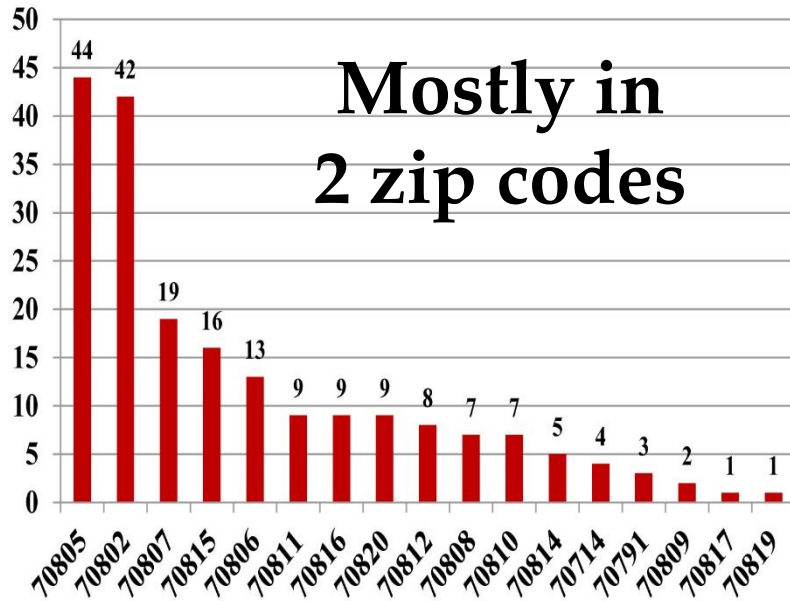
- Identify the primary crime and target offenders
- Convene an interagency team
- “Pull levers” that:
  - Sanction target offenders and their groups
  - Offer preventative services/resources
- Communicate these messages:
  - *You are targeted by the initiative*  
*Here’s why...*
  - *Levers are in place. They are...*
  - Community imperative:  
*Crime must stop!*



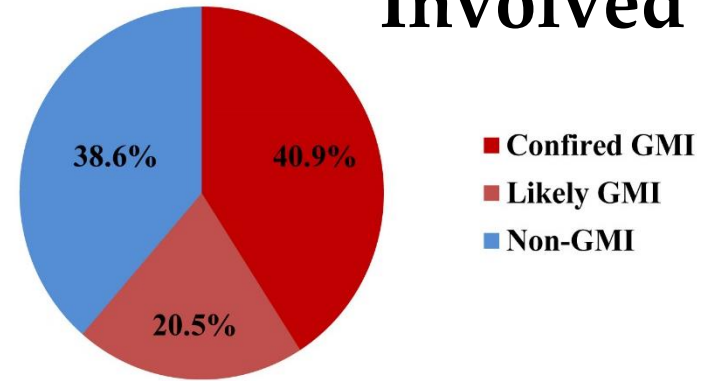
# BRAVE Strategy

# Violence in Baton Rouge in 2012

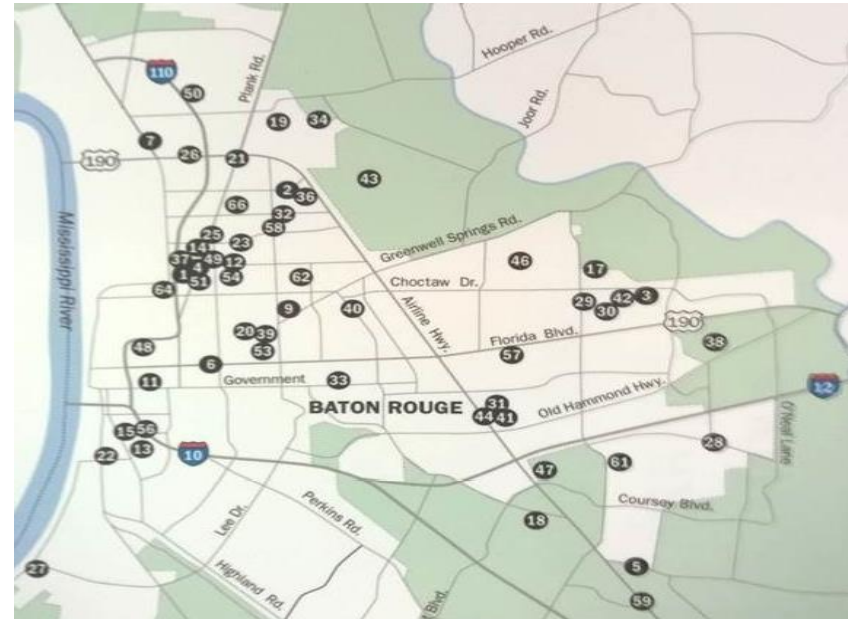
Figure 10: Baton Rouge Murders by ZIP Code, September 1, 2010 through October 8, 2012 (n=199)



**60% Group Member Involved (GMI)**



**Among the Top 25 “Most Dangerous Cities” in the U.S.**  
 — *Business Insider*, 2012





# Baton Rouge Responds

**2012**

- BRAVE Project Director
- Consult D. Kennedy, NNSC
- LSU Research Partner
- Exxon-Mobile Industrial Partner
- Chief Fealey, Officer Training
- 1<sup>st</sup> Community Engagement Meeting
- Service Provider Network formed
- Living Faith press conference
- Univ. of Cincinnati training

OJJDP Community Violence  
**Unfunded – 2011**  
**Funded- 2012**



Ribbon Cutting with BRAVE Partners

*New Form*

**2014**

- NNSC training
- Project Safe Neighborhood (PSN) expansion
- “Cops & Clergy” training

**2013**

- OJJDP grant expansion
- Byrne Criminal Justice Innovation (BCJI) awarded
- City of Milwaukee training

**2015**

- IDP training
- Crime Strategies Unit (CSU) introduced

*New Norm*



# The BRAVE Strategy

- **Group Violence Reduction Strategy (GVRS)**
  - Data-driven enforcement
  - Call-ins
  - Custom notification
- **Multisector Partnership Strategy**
  - Interagency service coordination
  - Research & Industry partners
  - Faith-based & community groups



# BRAVE GVRS Strategy

# GVRS Data-Driven Approach

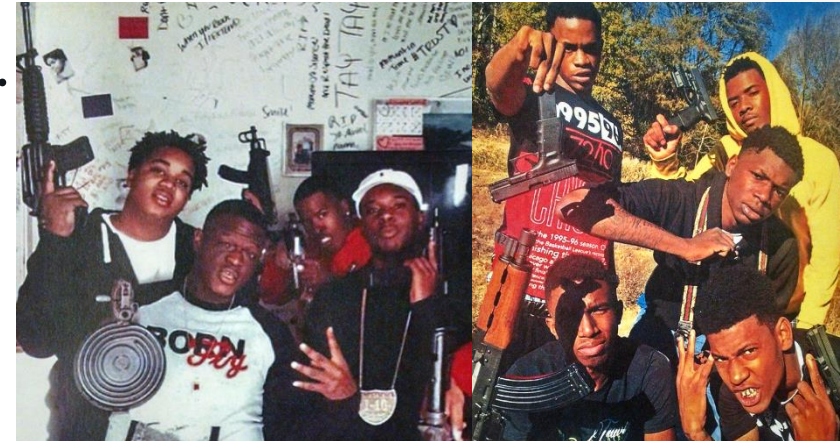
**WHO** commits violent crime...

...with **WHOM**

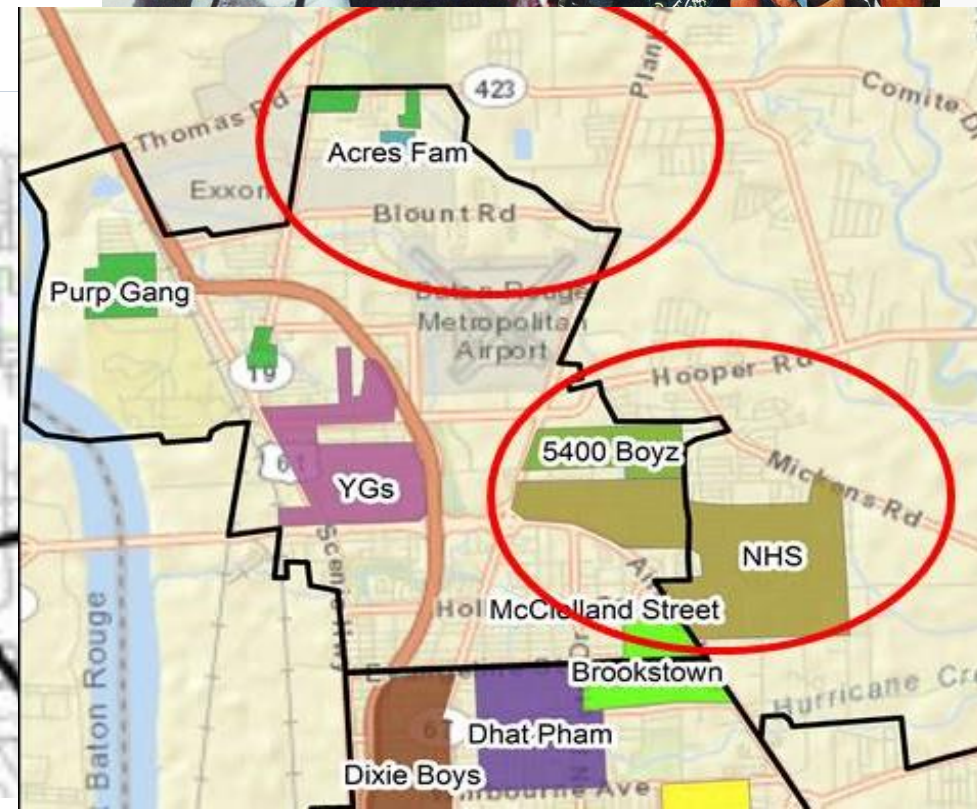
...**WHEN** (days & times)

...traveling to/from **WHERE**

...in **WHAT** locations



## Dash Board Report



# GVRS Call-Ins & Custom Notifications

Law enforcement & community partners communicate moral message against violence to select targets (most likely to kill or be killed)

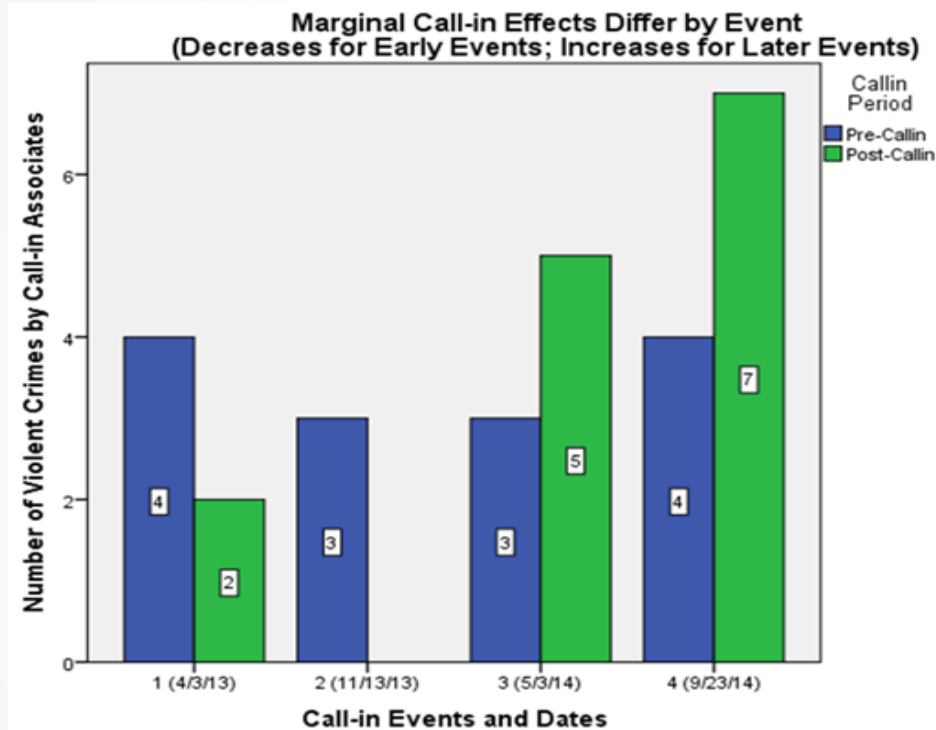
## CALL-IN STEPS

1. IDENTIFY GROUPS, GANGS, & MEMBERS
2. CONDUCT INCIDENT REVIEWS TO DETERMINE PROBLEM
3. DEMONSTRATE ENFORCEMENT ACTION
4. ORGANIZE SOCIAL SERVICES & COMMUNITY MORAL VOICES
5. IDENTIFY/NOTIFY 1<sup>ST</sup> GROUP FOR CALL-IN
6. CONDUCT CALL- IN OF 1<sup>ST</sup> GROUP
7. CONDUCT SWEEP OF 1<sup>ST</sup> GROUP
8. REPEAT



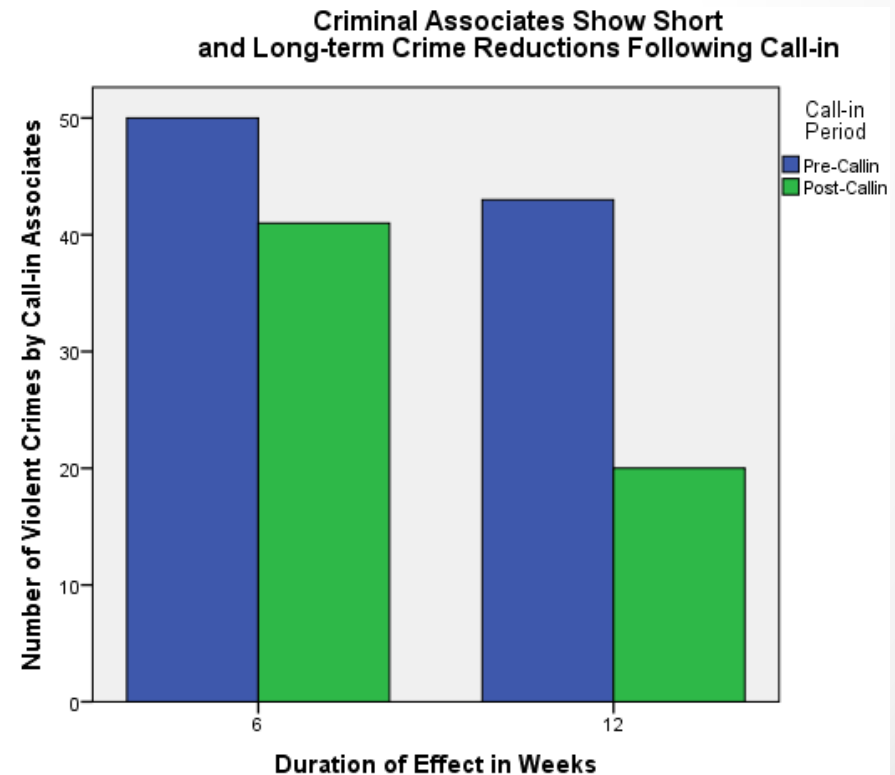
# GVRS Call-Ins & Custom Notifications

## Call-In Effects of Violent Crime



Participants reduce violent activity  
in the short-term  
(especially for earlier call-ins)...

...but crime reduction among  
participants' associates is  
pronounced and enduring.



BRAVE  
Multisector  
Partnership  
Strategy

# Interagency Service Providers

**BRAVE links at-risk youth & their siblings to needed services**

## YOUTH SERVICE PARTICIPATION

SERVICE	YEAR 1	YEAR 2	TOTAL*
Addiction Treatment	2	14	16
Assessment/Case Management	18	36	36
Educational Services	18	24	24
Employment	4	10	10
Family Mentoring	6	10	16
Financial Counseling	6	10	16
GED/HiSet Preparation	6	5	11
Job Assessments	6	10	16
Job Seeking	9	24	33
Job/Career Readiness	9	24	24
Local Community College	1	4	5
Mental Health Treatment	4	18	22
Mentoring	3	1	3
Police Mentor Services	2	9	9
TABE Testing	6	5	11
Technical School	2	3	5
Traditional School	-	17	17
Transportation	16	24	24

**The methods used to accomplish this objective include:**

- Referral system to service providers
- Assessment
- Provision of services to youth and their families
- Monitoring

## BRAVE SERVICE PROVIDERS

ACE Program  
 Adult Learning Center  
 Adult Literacy Program  
 Baton Rouge Community College  
 Capital Area Re-Entry Coalition  
 Capital Area Human Services District  
 East Baton Rouge Parish School System  
 Family and Youth Service Center  
 Healing Place Dream Center  
 Home Builder's Institute  
 HOPE Ministries  
 Job Corps  
 Louisiana National Guard Youth Challenge Program





# Industry & Research

**Industry partners** link youth to jobs



BRAVE Researcher Dr. Tracey Rizzuto talks about creating safety in communities

<https://www.youtube.com/watch?v=2OO-FSdMJIM>

**Research partners** provide analytic support



LSU Press Conference with LSU President F. King Alexander and Mayor Kip Holden along with BRAVE Partners

# Faith-Based & Community

- Community events
  - Back-to-School backpacks
  - Community Clean-up & Canvass
  - School visits/mentorship
- [“Cops & Clergy”](#) training



BRAVE Director Anny at neighborhood canvass



CommUNITY Back to School Extravaganza

BRPD officers at BRAVE event

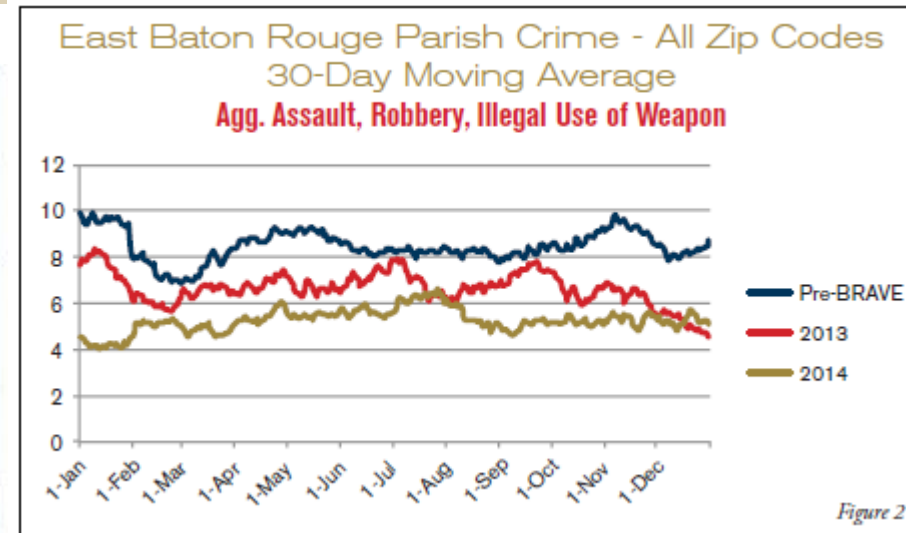
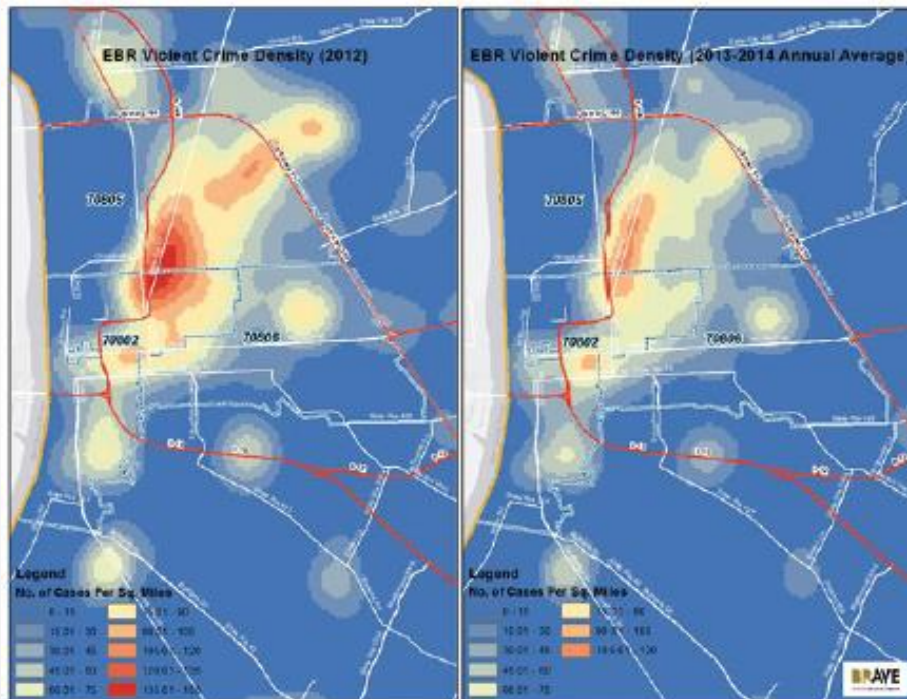
# Cops & Clergy Training

**Cops and Clergy.mp4**

# The BRAVE Today (and Tomorrow)

Violent crime is down. Adaptation is needed.

Violent Crime	2010	2011	2012	2013	2014	TOTAL
Murder	.*	.*	84	65	63	212
Robbery	1,030	943	1,022	870	669	4,534
Aggravated Assault	1,050	1,200	1,111	908	859	5,128
Illegal Use of a Weapon	467	724	642	345	372	2,550



Hotspots are shrinking. Every day is safer since BRAVE.

# The BRAVE Today (and Tomorrow)

## Lessons Learned

- Faith-based relationship and community trust
- Despite industry partners, transportation is an issue
- Balancing group offenders and repeat offenders
- Involving judges and prosecutors in the process



**Baton Rouge**

**Crime Strategies Unit (CSU)**

**September 1, 2015**

# THANK YOU!



East Baton Rouge Parish District Attorney Hillar C. Moore III  
and  
Dr. Tracey Rizzuto, LSU School of Human Resource  
Education and Workforce Development  
(trizzut@lsu.edu)



# **Kansas City No Violence Alliance**

**Jean Peters Baker**

Jackson County Prosecutor

**Teen who performed at Obama inaugural events shot dead in Chicago**  
January 31, 2013 [CNN.com](#)

**Chicago needs National Guard to help deter Violent Crime**  
May 18, 2014 [Examiner.com](#)

**How Chicago Became the Deadliest City in America**  
November 23, 2012 [Business Insider](#)

**FBI: Chicago officially America's murder capital**  
September 19, 2013 [FoxNews.com](#)

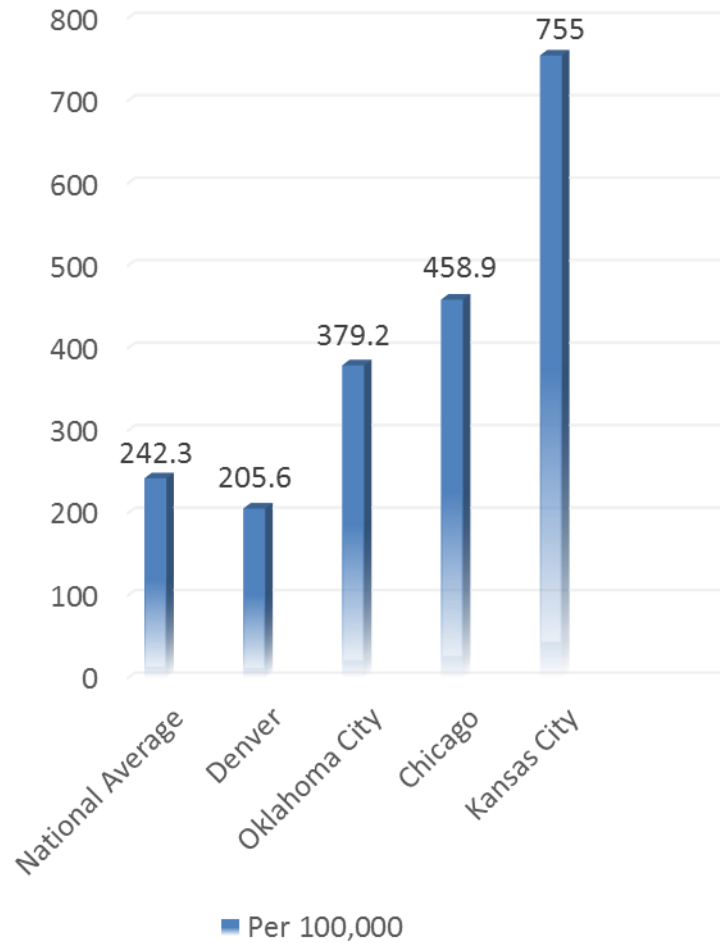
**270 Chicago Children Killed**  
December 12, 2012 [Huffington Post](#)

**Chicago mom loses all four children to gun violence**  
January 28, 2013 [CBS News](#)

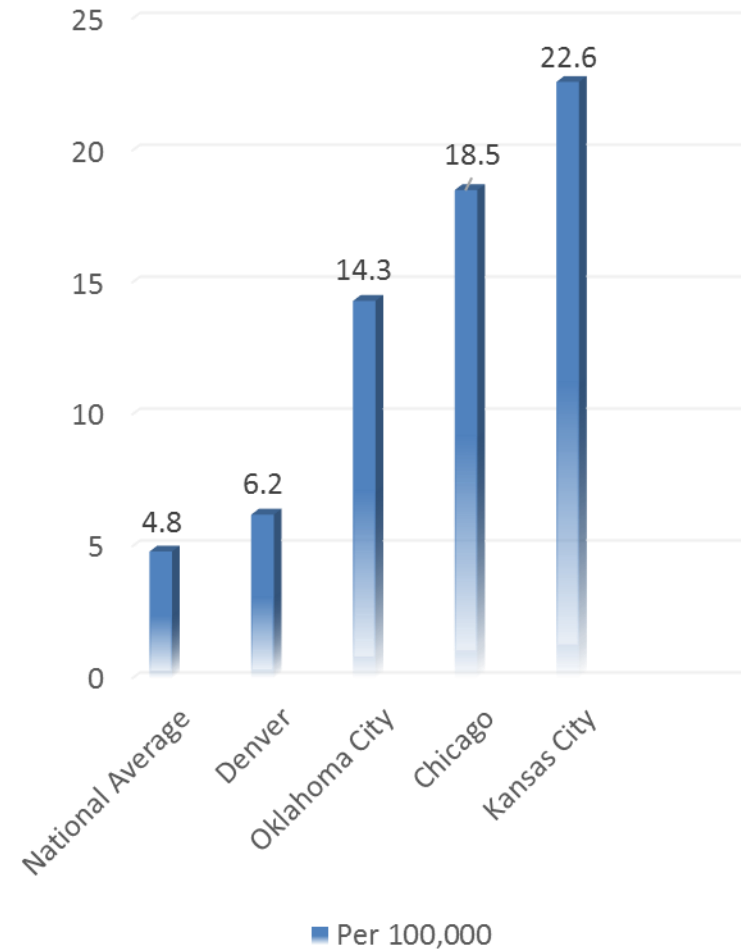
**Amid weekend of violence, 6 children shot Sunday night**  
Chicago Tribune April 21, 2014



# Violent Crime Statistics, 2013

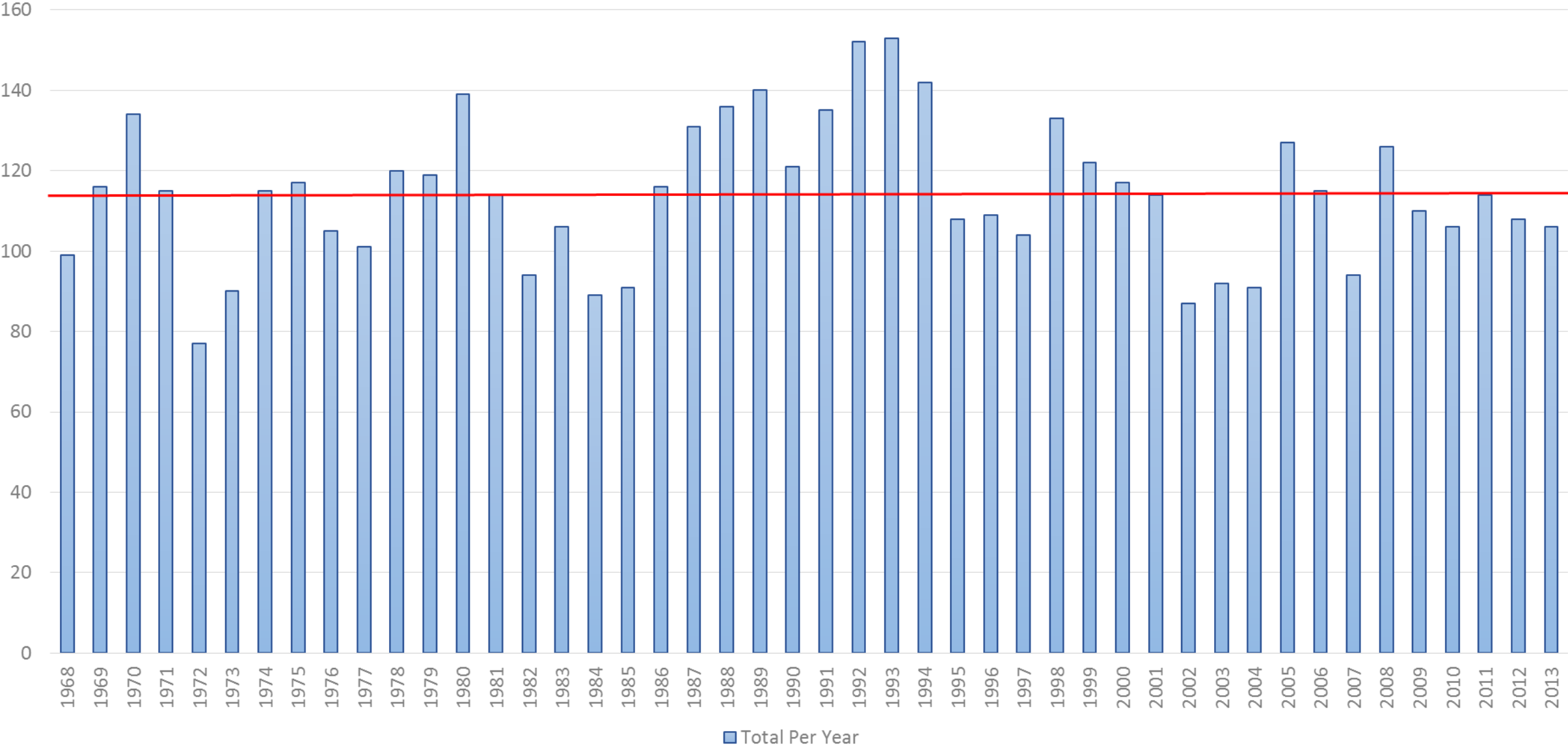


Aggravated Assaults



Murder

# Kansas City Homicides—Average 114 Annually



# High Cost of a Single Murder

<b>TYPE OF COST</b>	<b>MONETARY VALUE</b>
Tangible Cost	
Crime Victim Cost	\$ 737,517
CJ System Costs	\$ 392,352
Crime Career Cost	\$ 148,555
Sub total	\$ 1,278,424
Intangible Cost	
Pain & Suffering	Undetermined

\* Novak, Kenneth, Ph.D. (2013). Fact Sheet: Cost of Violent Crime 2013. University of Missouri-Kansas City (UMKC) Department of Criminal Justice and Criminology (CJC).



4 BONUS ISSUES  
SUBSCRIBE

Search

Like 516k Follow @BW

- Global Economics
- Companies & Industries
- Politics & Policy
- Technology
- Markets & Finance
- Innovation & Design
- Lifestyle
- Business Schools
- Small Business
- Video & Multimedia



## Travel

# America's 50 Best Cities

By Alex Konrad on September 28, 2012 | 662 Comments | Email | PREVIOUS | NEXT



Photograph by Walter Bibikow

37 of 51

[Read the story](#)

## Kansas City, Missouri

Rank: 15

Population: 458,064

Were it not for its high crime rate, Missouri's largest city might rank even higher.

Residents working in the city's downtown area are watched over by the iconic Kansas City Power & Light Building, while shoppers can get lost in local shopping centers such as Country Club Plaza and the Legends at Village West. For a unique blend of technology, arts, and history, residents can always stop by the city's old transportation hub, Union Station.

Bars: 113

Restaurants: 921

Museums: 28

Libraries: 19

Pro sports teams: 3

Park acres per 1,000 residents: 36

Colleges: 15

Percent with graduate degree: 7.3

Median household income: \$59,980

## Related



## More To Watch

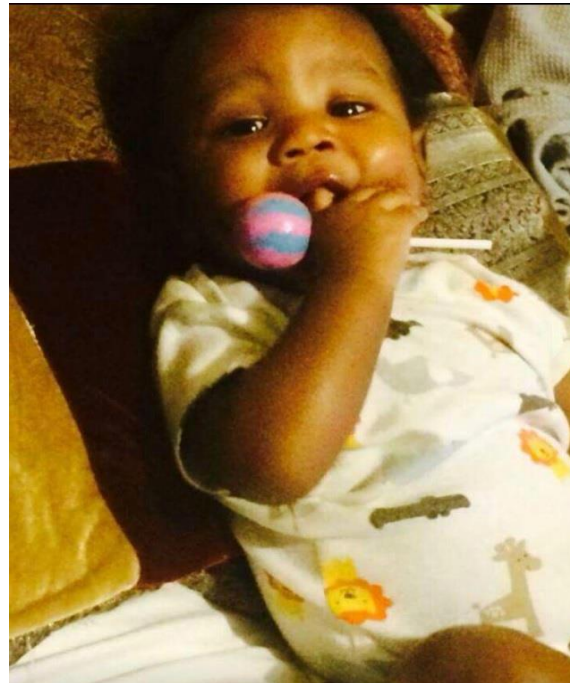
by Taboola



SPECIAL OFFER | SUBSCRIBE AND SAVE 89%

Feedback

# Beyond the Numbers



# What Is KC NoVA?

A violence reduction initiative utilizing an evidence-based approach called **focused deterrence**

A multiagency, multifaceted collaboration in Kansas City



# Kansas City No Violence Alliance (KC NoVA)

- This is not a new idea. It is new to Kansas City. It has been done and is being done in numerous cities—producing the desired result (lower homicide numbers)
- The cities (to name a few) include:
  - Boston, MA
  - Cincinnati, OH
  - Highpoint, NC

# How It Works

Step 1 – Organize your team

Step 2 – Identify problem, including violent group/gangs and members

Step 3 – Engage community

Step 4 – Directly engage and deliver core message

Step 5 – Deliver promises/consequences

Step 6 – Measure and repeat



# KC NoVA Governing Board



**JACO**  
**Prosecutors**



**KCPD**



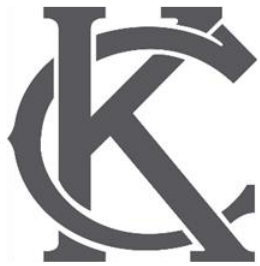
**KC NoVA**  
Kansas City No Violence Alliance



**ATF**



**UMKC**  
**University of**  
**Missouri - Kansas**  
**City**



**City of Kansas**  
**City**



**U.S. Attorney**



**MO Probation &**  
**Parole**

# NoVA Governing Board

## Strategic Direction of KC NoVA

- KCPD Chief
- Jackson County Prosecutor
- KC Mayor
- U.S. Attorney
- UMKC Chancellor
- Probation and Parole Regional Administrator
- ATF SAC
- FBI SAC

# Implementation Committee

Problem-solve in areas not specifically addressed by the plan and would adjust the plan where the committee deems necessary to ensure the continued success to KC NoVA efforts.

- NoVA Project Manager
- UMKC Researchers
- NoVA Probation Parole Sgt
- NoVA Operations Sgt
- Jackson County Prosecutor's Office
- Probation Supervisor
- ATF Agent

# Data Committee

NoVA must have a clear pictures of the groups and individuals engaged in violent crime.

- LERC Crime Analysts
- NoVA Detectives
- ATF Investigator
- UMKC Researcher
- NVD Analyst

# Enforcement Committee

When an act of violence is committed by a person in a group or network targeted by KC NoVA, a multi-agency team will respond by seeking all possible sanctions against the suspect and other group members associated with the suspect.

- Jackson County Prosecutor's Office
- U.S. Attorney's Office
- City Prosecutor's Office
- Probation and Parole
- KCPD Enforcement Commanders
- UMKC Researcher

# Service Committee

Use case managers to intensively work with network members in order to turn many of their lives in a more productive direction. Help others in the NoVA networks avoid the consequences of violence.

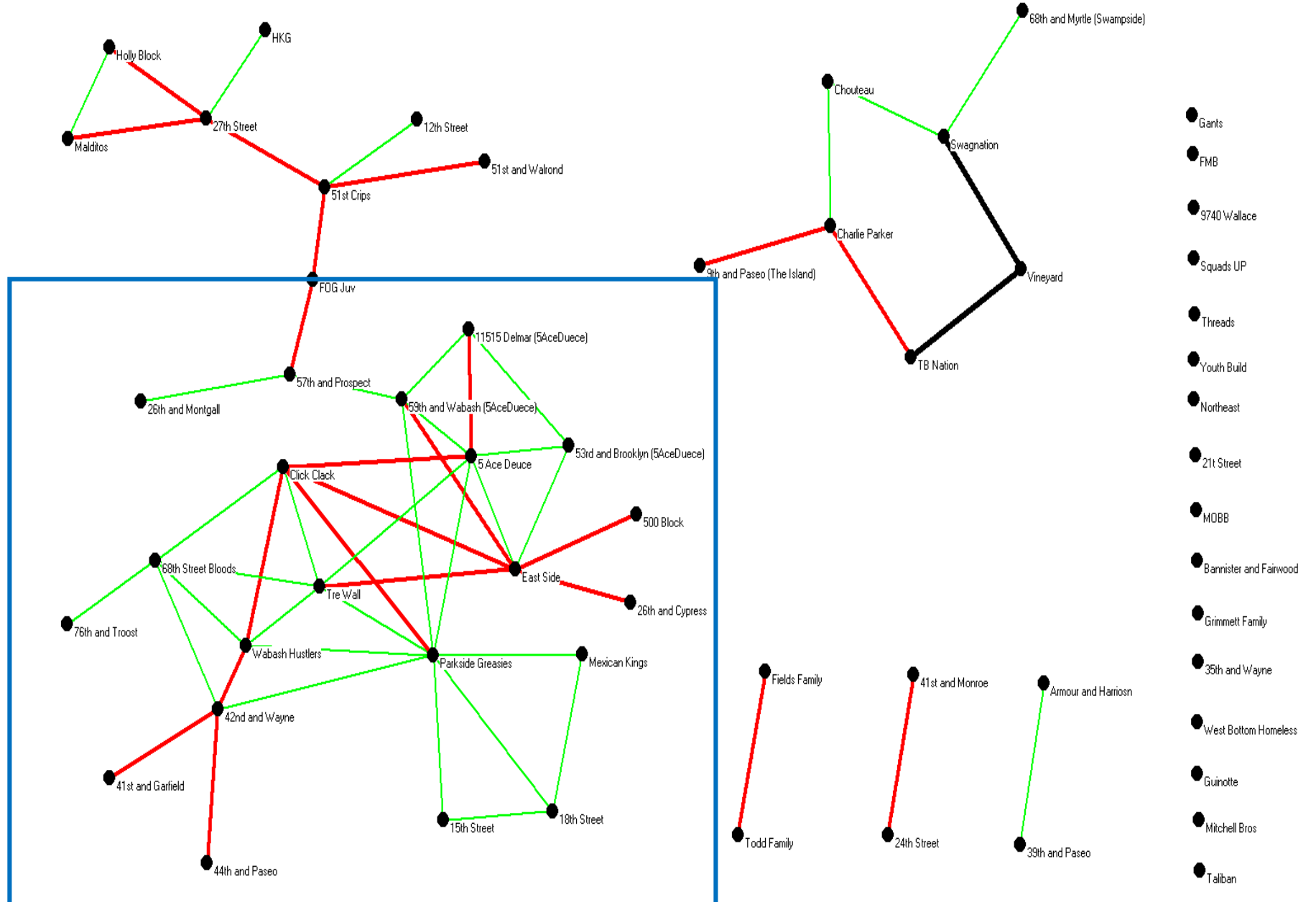
- COMBAT Administration
- NoVA Social Services supervisor
- Probation and Parole representative
- NoVA Probation and Parole Sgt
- Service Provider
- NoVA Detective

# Community/Messaging Committee

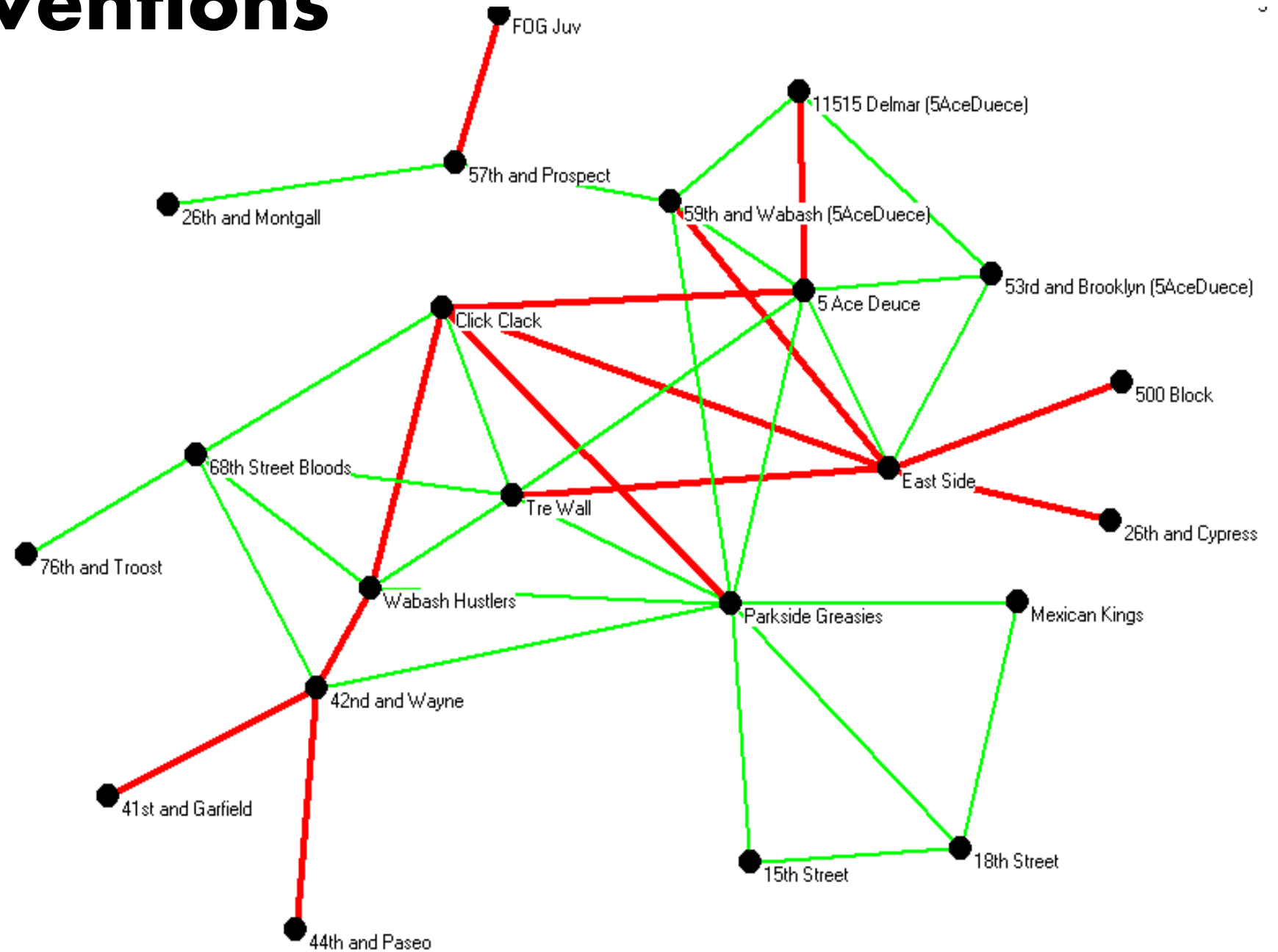
Systematically notify those persons identified in NoVA networks that violence will not be tolerated. Strengthen collaboration between law enforcement and community.

- NoVA Community Organizer
- NoVA Detective
- Jackson County PIO
- Jackson County Neighborhood Prosecution
- NoVA Community Based Representatives

# Group Interventions



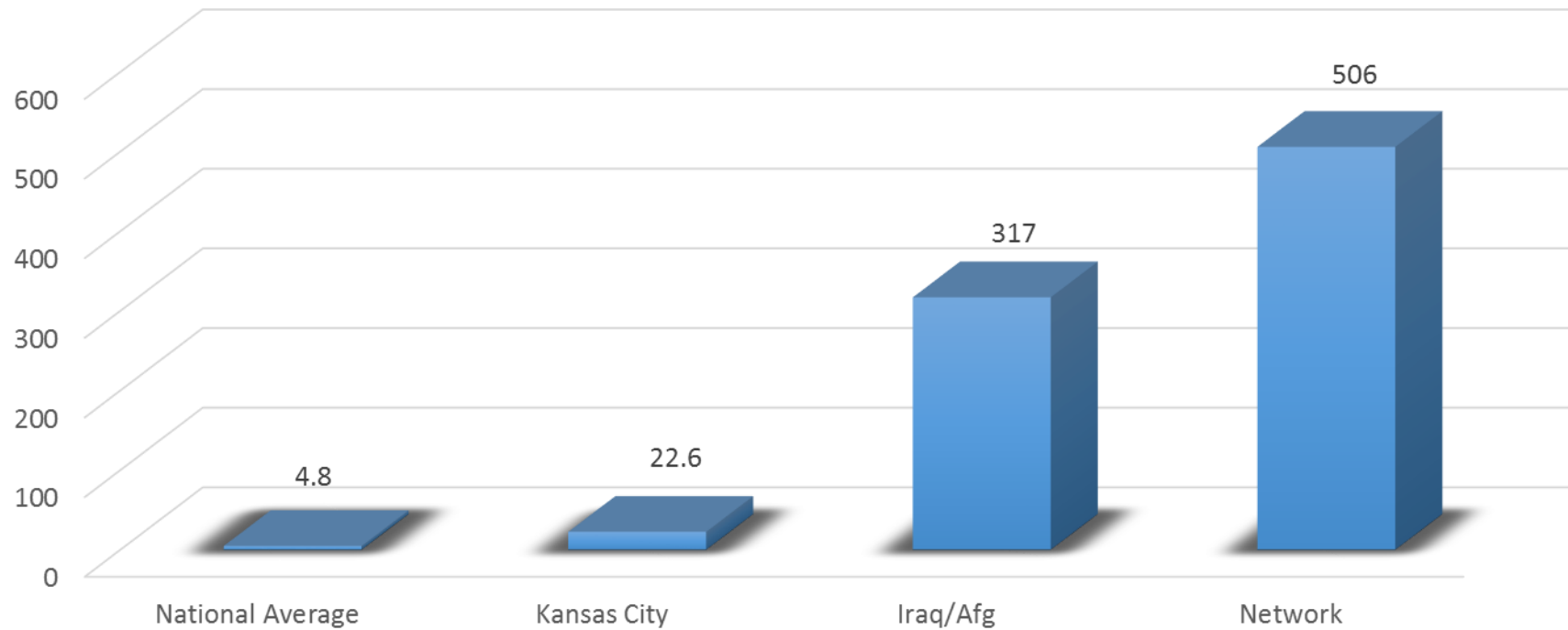
# Group Interventions



# Community Partners



# KC NoVA's Network—Homicide



# Focused Deterrence Three Basic Messages

- Moral voice. **Violence can no longer be tolerated.** Its impact on our community is too devastating
- The **next group involved in violence will face enforcement** from all partners in this effort, including ATF, FBI, and U.S. Attorney's Office. This means every member of the group faces a consequence
- **We will help you with social services and other help,** if you will accept. We want to help you improve your life

KC NoVAs 2nd call-in of 2014.mp4



# Homicide Numbers Since 2010



# Questions



Jean Peters Baker, Jackson County Prosecutor and  
KC NoVA Governing Board

[jpetersbaker@jacksongov.org](mailto:jpetersbaker@jacksongov.org)



# Question-and-Answer Session

Facilitated by Mr. Carmen Facciolo, BJA Policy Advisor



# VRN Closing Remarks

Kristie Brackens

